

18m Insulated EWP

GMJ LLF16/350



ATLANTIC RENTALS 1300 66 25 88

www.atlanticrentals.com.au

INTRODUCTION

The market leader in design and innovation, the LLF16.350 has a long standing reputation as the preferred MEWP in the electrical and tree service industry.

Designed to meet the superior Australian Standard for mobile elevated work platforms, this model has been under continuous refinement since it was first introduced to live line servicemen and arborists in 1999. Today it is one of GMJ's most established models, which in 2013 underwent additional improvements in design to meet the requests of operators and further enhance its capabilities.

A robust construction made to withstand the harsh Australian environment, the MEWP has been designed with serviceability in mind, sharing common components with other GMJ models to ensure spare parts are readily available.

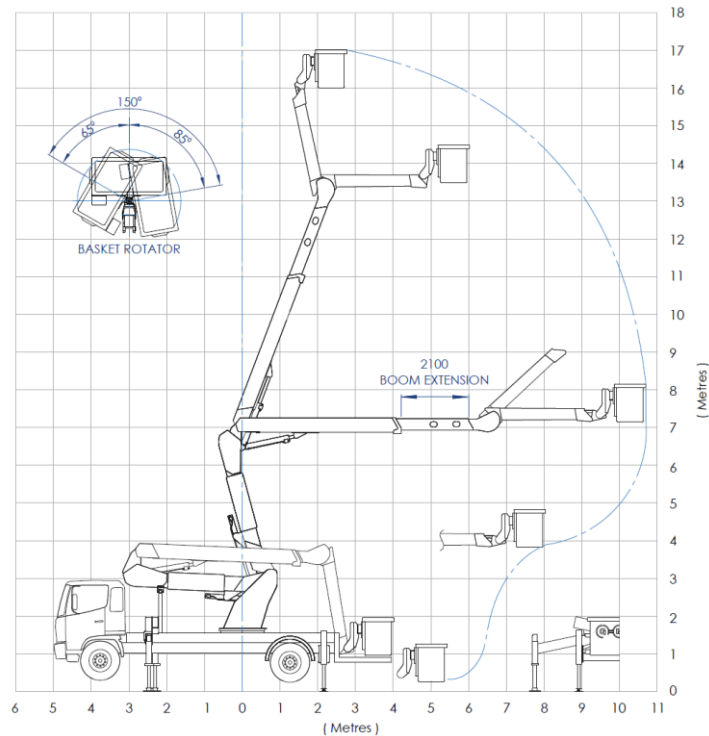
The boom configuration has been tailored to maximise the working envelope, ensuring the operator can safely manoeuvre with ease. For protection against electrical hazards, the unit features a 33kV chassis insulator and a 132kV insert in the fly boom. Furthermore, the special coating applied to the fibreglass surfaces on the inside and outside of the components permits 33kV wet protection throughout the life cycle of the unit.



For more information please visit www.gmj.com.au

Proudly designed and manufactured in Australia

TECHNICAL SPECIFICATION & FEATURES



OPERATING SPECIFICATION

Model	LLF16-350 – Series 3	
Boom configuration type	Articulated / telescopic / fly	
Safe working load	350 kg	S
→ With basket rotator	350 kg	O
Basket construction	Fibreglass - Flame retardant to ASTM D635	
Working height	17.5 m	
Floor height	16.0 m	
Reach	11.0 m	
Relevant conformance standard	AS/NZS 1418.10:2011 – Mobile elevating work platforms	
Cab chassis requirement	4.8 m, 13,000 kg GVM	
	5.0 m – With basket rotator	

S STANDARD

O OPTION

X NOT APPLICABLE

OPERATING SPECIFICATION CONT.

Mass of unit incl. tray body 6,700 kg – Approx

Travel height 3.6 m – Approx

→ INSULATION SPECIFICATION

Chassis insulation rating	33 kV - Dry	S
	33 kV - Wet	O
Basket operator insulation rating	132 kV - Dry	S
	66 kV - Wet	O
Chassis insulation effective length	0.5 m	
Basket operator insulation effective length	2.0 m	
Low voltage insulation	All metallic portions about 4.5 m	

→ STABILISATION

Front type	Hydraulic in/out – up/down	S
Rear type	Hydraulic up/down	S
Spring lockouts	No requirement for stabiliser legs to be deployed. Allows restricted slew from the stowed position	O
Automatic stabilisation	Automatic stow/engage & level at the touch of a button	O
Max. stabiliser spread	4.4 m	
Ground penetration	0.25 m	S
	0.40 m	O
	0.79 m – High-rise legs	O
Max. operating chassis slope	± 5°	
Max. stabiliser load	100 kN (10,000 kg) – Per pad	
Max. operating wind speed	12.5 m/s (45 km/h)	
Level indicators	3 off visible at stabiliser controls	S

→ BOOM PERFORMANCE

Slew	Continuous 360°	
Lower boom	1.5° → 77°	
Upper boom	-11° → 75°	
Extension boom	2.1 m stroke	
Fly boom	-90° → 45°	

TECHNICAL SPECIFICATION & FEATURES

OPERATING SPECIFICATION CONT.		
→ BOOM SPEEDS		
Slew ±360°	90 – 100 sec	
Lower boom – Raise/lower	35 – 45 sec	
Upper boom – Raise/lower	30 – 40 sec	
Extend – In/out	30 – 35 sec	
Fly boom – Raise/lower	20 – 25 sec	
→ SAFETY FEATURES		
Emergency stops	Emergency stops located at all control locations with indication light to illustrate when active	S
Over centre valves	O/centre valves fitted to all cylinders to prevent unintended movement in the unlikely event of hydraulic hose failure	S
Basket tilt	Basket tilt function to allow retrieval of injured personnel in the event of emergency use	S
Boom/Stabiliser interlock	Boom/stabiliser interlock to prevent the operation of the booms without the stabilisers safely engaged	S
Basket tie down interlock	Prevents the ability to pack up the stabiliser legs unless the basket is correctly tied down and the boom fully stowed	O
Back-up retrieval systems	Auxiliary manual controls located at the base	S
	Electro-hydraulic power pack	S
	Hand pump back-up for all booms and stabilisers	S
	Manual bleed down screws fitted to cylinders for manual retrieval	S
	Controlled decent devices fitted to the basket for each operator	S

FACTORY OPTIONS

FACTORY OPTIONS		
→ MOTION CONTROLS		
Basket controls	Pilot pressure joystick	S
→ Radio remotes (Single)	Autec	O

FACTORY OPTIONS CONT.		
→ Radio remotes (Dual)	Remote option also available in dual controls	O
Basket slew control	Inbuilt into remote & basket controls	O
Auxiliary base controls	Manual controls located at the pivot frame	S
	Spool positioning	O
Stabiliser controls	Location customer specific	S
Engine stop / start	Located at the basket & pivot frame (other locations avail.)	S
→ BASKET		
Basket construction	Fibreglass - Flame retardant to ASTM D635	S
	Non-slip grit type on internal/external access steps	S
Basket size (internal)	1.2 m (wide) x 0.7 m (long) x 1.0 m (high)	O
	1.35 (wide) x 0.65m (long) x 1.0m (high)	S
	1.5 m (wide) x 0.7 m (long) x 1.0 m (high)	O
Basket articulation	0° - Fixed	S
	150° - Helical rotary actuator	O
Basket liner	Flame retardant to ASTM D635 - Includes 2 internal access steps	O
Basket accessories	Lifting jib attachment - 150 kg SWL	O
	Ribbed vinyl basket cover	O
	Fibreglass removable tool tray	O
→ HYDRAULICS		
Hydraulic circuit	Closed centre	O
	Open centre	S
Hydraulic operating pressure	17 MPa	S
Hydraulic pilot pressure	3.5 MPa	S
PTO & Pump (Gear type)	Single displacement - Single (Closed centre)	S
	Single displacement - Tandem (Hydraulic tools)	O
Accumulator size (Closed centre)	37L	S
	50L	O
Hydraulic tank	140L - Capacity	S
	Sight glass with temperature gauge	S