

15m Insulated EWP

Nifty Lift NL140RKT



ATLANTIC RENTALS **1300 66 25 88**

www.atlanticrentals.com.au



ELEVATING WORK PLATFORMS

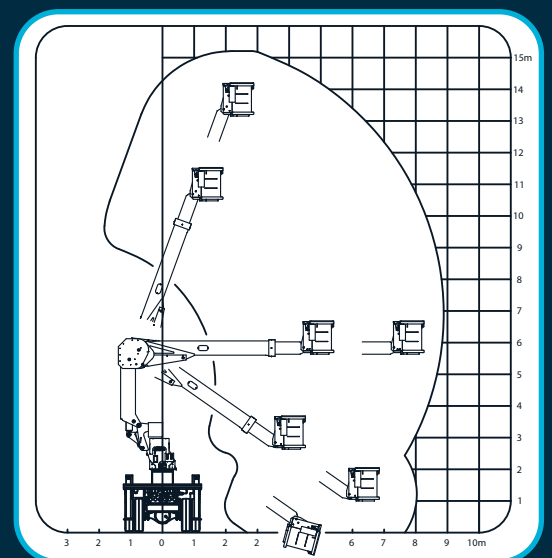


NL140RKT

NL140RKT

Working Height	15m*
Basket Floor to ground	13m*
Rated Capacity	250kg
Maximum Reach	8.9m
Distance to Front Basket	8.2m
Slew	360
	continuous
Travelling Height	3.5m*

* (Depending on truck chassis height)



t + 61 3 9725 0077
f + 61 3 9725 0044
sales@nifty-lift.com.au

www.nifty-lift.com.au



NL1 40RKT

Elevating Work Platform Specification

Type

Double boom articulated with telescopic upper boom, capable of continuous rotation in either direction. Hydraulic basket levelling system, with emergency tilt facility.

Suitable Vehicles

Minimum 10 tonne GVM, depending on required payload. Suitable for 4x2, 4x4 and 6x4 chassis.

Platform Height

1.5m nominal working height. 1.3m nominal basket floor height (depending on truck chassis height).

Telescopic Extension

2.9m

Travelling Height

3.5m on average 10 tonne GVM chassis.

Radius of Operation

8.2m to outside edge of basket at 4.5m basket floor height.
Maximum reach 8.9m.

Rated Capacity

250kg standard depending on options fitted, chassis GVM, and type of stabilisation. Optional 325kg version available.

Zero tail swing

Interlocked bottom boom optional.

Slewing

Ball bearing slew ring, hydraulic and electric swivel couplings offered as standard equipment, offering 360 degree continuous slew. Automatic spring applied, hydraulically released slew brake standard.

Main Frame

Constructed from high tensile steel tubing to form a rigid base for the platform and stabiliser attachment points.

Stabilisation

Two pair of vertical hydraulic stabiliser legs with self aligning foot pads standard. Capable of lifting the full

GVM of the truck. Approx. 400mm ground penetration.

'Out and down' stabilisers optional where required for stability. Optional long stroke stabilisers for increased leveling ability. Optional suspension lockout system.

Tray body

Heavy duty aluminium tray body as standard. Steel chequer plate tray body optional. Tray access and basket access handrails standard. Pedestal and truck gearbox inspection access standard.

Controls

Non-insulated, low voltage insulated, and high voltage insulated platforms fitted with proportional electric or radio remote controls. Proportional pilot controls optional, along with dual radio remote control.

Emergency

Emergency base controls are provided at the turret. These controls can be used in conjunction with PTO/pump,



accumulator or optional emergency electric power pack. Emergency hand pump standard.

Basket

Optional basket sizes 1200 x 600 or 1500 x 700 (inside) x 1000 high. Constructed from fire retardant FRP with UHMWPE protective handrail for insulated platforms. Steel basket and handrail construction for non-insulated platforms. Safety harness anchors fitted. Heavy duty vinyl basket covers available for FRP baskets. Controlled descent devices optional.

Insulation

Low Voltage or High Voltage insulation complying with Australian Crane Code AS1418.10.

Comprising optional 33kV FRP insert in lower boom and 66kV insert in upper boom. 132kV insulation optional.

Electrical Testing & Insignia

In accordance with AS1418.10.

Hydraulic System

Motion of each boom and slew is independently hydraulically controllable. Fully proportional main control valve. Power Take Off (PTO) or optional auxiliary engine power.

Main hydraulic tank (130 litre) incorporates a drain cock and isolating ball valve to facilitate maintenance, and a level/temperature gauge. Pressure gauge to system. All cylinders are double acting. Closed circuit hydraulic system with accumulator, or open circuit hydraulic systems available. All cylinders and slew motor fitted with holding valves. Manual bleed down to lift cylinders optional. Hydraulic tool circuit with outlets to basket and/or tray available.

Electrics

12V or 24V electrical system depending on cab chassis. PLC or CANbus control available. Auxilliary batteries and charge systems available.

Interlocks

Boom and stabiliser legs interlocked to prevent operation of boom without stabilisers engaged, and prevent operation of stabilisers when boom lifted.

Optional interlocks- limited slew, basket and boom tie downs, bottom boom touch potential, 'Out of level' shutdown.

Warning indicators

System On, PTO Engaged, Boom 'not stowed', Stabilisers 'not stowed', System Charging, Accumulator Charged, standard.

Stabiliser Ground Sense, Access Steps 'not stowed', Locker Door Open, Radio Remote Active, Hydraulic Tools Active, High pressure and return filters clogged, Vice 'not stowed', 'Out of level', all available.

